

# 10th International Regional Innovation Policies Conference

15 - 16 October 2015  
Karlsruhe

## Programme



Organized by



ISI



**Bureau  
d'économie  
théorique  
et appliquée  
(BETA)**

UMR 7522

We would like to thank the DFG and eucor for the support of the conference.



The Deutsche Forschungsgemeinschaft (DFG) is the self-governing organisation for science and research in Germany. It serves all branches of science and the humanities. In organisational terms, the DFG is an association under private law. Its membership consists of German research universities, non-university research institutions, scientific associations and the Academies of Science and the Humanities.

The DFG receives the large majority of its funds from the federal government and the states, which are represented in all grants committees. At the same time, the voting system and procedural regulations guarantee science-driven decisions.



Founded in 1989, the Confederation of Universities on the Upper Rhine (eucor) is the principal actor engaged in research and teaching in the Upper Rhine Trinational Metropolitan Region. Eucor plays a pioneering role in European cross-border cooperation in higher education and research and currently includes five German, French, and Swiss universities located within a radius of only 200 km: Basel, Freiburg, Upper Alsace, Karlsruhe, and Strasbourg.

Thanks to a concentration of research institutions that is exceptionally high in European comparison, the Upper Rhine region provides ideal conditions for the approximately 15,000 researchers, 11,000 doctoral candidates, and 115,000 students at the member institutions. The five partner universities have a total budget of 2.3 billion Euros.

## Karlsruhe Institute of Technology (KIT)

The Karlsruhe Institute of Technology, briefly referred to as KIT, was established by the merger of the Forschungszentrum Karlsruhe GmbH and the Universität Karlsruhe (TH) on October 01, 2009. KIT combines the tasks of a university with those of a research centre of the Helmholtz Association in the areas of research, teaching, and innovation. With more than 9,000 employees and an annual budget of about EUR 800 million, KIT is one of the biggest research and education institutions worldwide. The team at the Chair in Economic Policy at KIT analyzes government activity. The three core areas are Innovation, Economic Growth and Regional Development. In their research the team develops formal theoretical models and applies these models by means of simulations and empirical analyses to economic problems.



## Fraunhofer Institute for Systems and Innovation Research ISI



The Fraunhofer Institute for Systems and Innovation Research ISI analyzes the origins and impacts of innovations. We research the short- and long-term developments of innovation processes and the impacts of new technologies and services on society. On this basis, we are able to provide our clients from industry, politics and science with recommendations for action and perspectives for

key decisions. Our expertise is founded on our scientific competence as well as an interdisciplinary and systemic research approach.

## Bureau d'Economie Théorique et Appliquée (BETA)

BETA (Bureau for Economic Theory and Applications) is a research laboratory of the University of Strasbourg, University of Lorraine and the French National Centre for Scientific Research CNRS. With about 120 staff members, it is the largest academic lab in economics and management science in the North-East of France, and it has developed many international cooperations in the last 40 years. BETA's activities cover a large range of topics dealing with basic as well as applied scientific research. One of its traditional "research axes" focuses on "Science, technology and innovation".





## About Karlsruhe

Karlsruhe is a city in Baden-Württemberg (Germany). Founded in 1715, it became the capital of Baden until 1945. In 1950, Karlsruhe became the seat of the two highest courts of justice in Germany: the Federal Constitutional Court and the Federal Court of Justice.



Therefore, Karlsruhe bears the slogan "residence of justice". The city is also nicknamed: "Die Fächerstadt" because of its layout, with the tower of the Palace at the centre and 32 streets radiating out from it like spokes on a wheel on a folding fan.



From the residence of the Grand Dukes of Baden to the centre of the technology region - Karlsruhe has many faces and looks back on a very young city history encompassing nearly 300 years. The quality of life in this city of over 300,000 inhabitants is high, and the region is booming. Karlsruhe is a city that can be referred to as a "knowledge factory with savoir vivre".



© Stadt Karlsruhe

## Keynote speaker



**Dominique Foray** is Full Professor at the Ecole Polytechnique Fédérale de Lausanne (EPFL) and holds the Chair of Economics and Management of Innovation (CEMI). He is a member of the National Research Council (Switzerland); the Advisory Board of the Swiss Economic Institute (KOF); the World Economic Forum's Global Agenda Council; and a foreign member of the Center of Capitalism and Society (Columbia University, New York).

From 2008 to 2011, he served as chairman of the expert group "Knowledge for Growth"; a group of prominent economists created to advise Commissioner J. Potocnik (European Commission, DG research). This is during his service as member of this Group that he developed the concept of smart specialisation (together with P.A. David and B. Hall) that is now a key policy mechanism of the EU (cohesion policy).

D. Foray research interests include all topics and issues related to the economics and management of technology, knowledge and innovation at both the micro and macro levels. This broad field covers the economics of science and technology with a particular focus on high tech sectors, the management of large-scale technological projects, international comparisons of institutions, and systems of innovation within the context of the new economy. Intellectual property and competition policies, information technology and the new economy, capital market and entrepreneurship, national systems of innovation are fields of high relevance in his research.

**Robert Hassink** is Professor of Economic Geography at Kiel University in Germany and Visiting Professor in the School of Geography, Politics & Sociology at Newcastle University, UK. After receiving his PhD in 1992 from the University of Utrecht, the Netherlands, he has worked as a research fellow,



consultant, assistant and temporary professor at several research institutes and universities in the Netherlands, Germany, Norway and South Korea. Over the years he has carried out various research projects on regional innovation policies, industrial restructuring and regional economic development in Western Europe and East Asia, particularly South Korea, which have been sponsored by, among others, the European Science Foundation, the German Research Foundation, the Research Council of Norway, several Directorate-Generals of the European Commission, the World Bank and the OECD. Recently, he was project leader of the international collaborative research project "Cluster life cycles", sponsored by the Euro-

pean Science Foundation. He has published widely in English, Dutch, German, French and Korean and is author and co-author of 41 articles in journals included in the Social Sciences Citation Index (SSCI).



**David Doloreux** is a Full Professor in the Telfer School of Management at the University of Ottawa and holds the Research Chair on entrepreneurship, innovation and regional development. His research program focuses on two principal themes: the determinants of innovation in manufacturing firms and KIBS and the dynamics and functions of clusters and regional innovation systems across different sectors and regions in Canada and Europe. He has published, among others, in *Journal of Economic Geography*, *Industry & Innovation*, *Regional Studies*, and *Entrepreneurship & Regional Development*. He has co-edited one book: *Knowledge-Intensive Business Services: Geography and Innovation* (Ashgate 2010)

# Programme Overview

## Thursday, 15 October 2015

8:00	Registration and coffee	<i>Foyer Tulla Building</i>
9:00	Opening session	<i>Foyer Tulla Building</i>
9:30	<b>Parallel sessions I</b>	
	1.1 Smart Specialisation 1	<i>Tulla Building, Room 221</i>
	1.2 Networks & Complexity 1	<i>Tulla Building, Room 214</i>
	1.3 The role of proximity 1	<i>Tulla Building, Room 202</i>
	1.4 Advances in innovation system modelling 1	<i>Tulla Building, Room 231</i>
11:00	Coffee break	<i>Foyer Tulla Building</i>
11:30	<b>Parallel sessions II</b>	
	2.1 Smart Specialisation 2	<i>Tulla Building, Room 221</i>
	2.2 Networks & Complexity 2	<i>Tulla Building, Room 214</i>
	2.3 The role of proximity 2	<i>Tulla Building, Room 202</i>
	2.4 Advances in innovation system modelling 2	<i>Tulla Building, Room 231</i>
13:00	Lunch	<i>Canteen "Mensa KIT"</i>
14:15	Keynote lecture	<i>Hertz Auditorium</i>
15:15	Coffee break	<i>Foyer Tulla Building</i>
15:45	<b>Parallel sessions III</b>	
	3.1 Smart Specialisation 3	<i>Tulla Building, Room 221</i>
	3.2 Networks & Complexity 3	<i>Tulla Building, Room 214</i>
	3.3 The role of proximity 3	<i>Tulla Building, Room 202</i>
	3.4 Geography of creativity	<i>Tulla Building, Room 231</i>
17:15	End of first day	
19:00	Conference dinner	<i>Schloss Karlsruhe</i>

## Friday, 16 October 2015

8:00	Registration and coffee	<i>Foyer Tulla Building</i>
9:00	Keynote lecture	<i>Hertz Auditorium</i>
10:00	Coffee break	<i>Foyer Tulla Building</i>
10:15	<b>Parallel sessions IV</b>	
	4.1 Smart Specialisation 4	<i>Tulla Building, Room 221</i>
	4.2 New modes of innovation 1	<i>Tulla Building, Room 214</i>
	4.3 Renaissance of industrial policies 1	<i>Tulla Building, Room 202</i>
	4.4 Cross-border regions	<i>Tulla Building, Room 231</i>
12:00	Keynote lecture	<i>Hertz Auditorium</i>
13:00	Lunch	<i>Canteen "Mensa KIT"</i>
14:15	<b>Parallel sessions V</b>	
	5.1 Smart Specialisation 5	<i>Tulla Building, Room 221</i>
	5.2 New modes of innovation 2	<i>Tulla Building, Room 214</i>
	5.3 Renaissance of industrial policies 2	<i>Tulla Building, Room 202</i>
	5.4 New approaches to knowledge and technology transfer	<i>Tulla Building, Room 231</i>
16:00	Closing session and farewell coffee	<i>Foyer Tulla Building</i>



# Programme

Last minutes changes in the programme can occur.

## Thursday, 15 October 2015

8:00 Registration and coffee  
*Foyer Tulla Building*

9:00 Opening session  
*Foyer Tulla Building*

9:30 **Parallel sessions I**

---

### Track 1.1 **Smart Specialisation 1**

*Tulla Building, Room 221*

Chair: Jean-Alain Héraud

Cluster policies in the context of smart specialisation - Impressions from Germany

*Knut Koschatzky, Henning Kroll, Esther Schnabl, Thomas Stahlecker*

Smart Specialisation, new path development and transformation of regional innovation systems

*Björn Asheim, Markus Grillitsch, Jerker Moodysson, Michaela Trippel, Elena Zukauskaite*

Smart Specialisation: Diagnosing the potential of regions

*Martin Eichler, Andrea Wagner*

---

### Track 1.2 **Networks & Complexity 1**

*Tulla Building, Room 214*

Chair: Dimitris Assimakopoulos

Is ACAP a suitable tool for improving the effects of regional innovation networks?

*Marius Imset, Anne Haugen Gausdal*

Innovation through deliberate and strategic networks? Exploring regional innovation networks (RINs) in Eastern Norway

*Anders Underthun, Helge Svare*

Measuring #socialcapital with Twitter: the case study of the Electronic and Information Technologies cluster in the Basque Country

*Igor Etxabe Iruretagoiena*

---

---

**Track 1.3      The role of proximity 1**

*Tulla Building, Room 202*

Chair: David Charles

Knowledge base combinations and innovation performance in Swedish regions

*Markus Grillitsch, Roman Martin, Martin Srholec*

Relational universities: stressing bi-directional linkages in regional innovation

*Walter Ysebaert, Andre Spithoven*

Spatial Proximity to Research Institutions and Firm-Level Innovation in Germany

*Florian Heiko Kreuchauff, Vladimir Korzinov, Andrea Hammer, Ingrid Ott*

---

**Track 1.4      Advances in innovation system modelling 1**

*Tulla Building, Room 231*

Chair: Emmanuel Muller

(Re)Integration of Production in Urban Areas

*Sebastian Stiehm, Florian Welter, Anja Richert, Sabina Jeschke*

From a knowledge-based to a value-generating innovation policy: The case of TechnologieRegion Karlsruhe

*Jochen Guenter Ehlgoetz, Peter Heydebreck, Magnus Klofsten*

---

11:00      Coffee break

*Foyer Tulla Building*

11:30      **Parallel sessions II**

---

**Track 2.1      Smart Specialisation 2**

*Tulla Building, Room 221*

Chair: Henning Kroll

External "energy" for regional industrial change? Attracting and anchoring of non-local knowledge for new path development

*Michaela Trippel, Markus Grillitsch, Arne Isaksen*

Regional Specialisation and Labor Mobility - An Empirical Analysis of German Microdata for 2000-2010

*Alexander Cordes*

Smart Specialisation approach and development of Advanced Manufacturing Technologies in the case of less-developed countries

*Krzysztof Mieszkowski*

---

---

**Track 2.2      Networks & Complexity 2**

*Tulla Building, Room 214*

Chair: Martin Gjelsvik

A complexity theory approach to understand of the economic resilience and natural disasters.

*Giovanni Herrera, Gonzalo Rodríguez*

From a wheel to a Mercedes: Technology network and its emerging properties

*Vladimir Korzinov, Ivan Savin*

Don't lose sight of the forest for the trees: Minalogic and presto engineering as a "New Argonaut" in a French ICT ecosystem

*Dimitris George Assimakopoulos, Maria Tsouri*

---

**Track 2.3      The role of proximity 2**

*Tulla Building, Room 202*

Chair: Eckhardt Bode

Innovation and the Geography of Collaboration: A Panel Data Approach

*Rune Dahl Fitjar, Andrés Rodríguez-Pose*

Urbanity and institutions as drivers of innovation in knowledge intensive service firms

*Stephan Brunow, Andrea Hammer*

Firm Performance in the Periphery: On the Relation between Firm-Internal Knowledge and Local Knowledge Spillovers

*Markus Grillitsch, Magnus Nilsson*

---

**Track 2.4      Advances in innovation system modelling 2**

*Tulla Building, Room 231*

Chair: Edurne Magro

Addressing orientation failure: Conceptual thoughts on how to integrate directionality in the systems of innovation heuristic

*Ralf Lindner, Stephanie Daimer, Bernd Beckert, Nils Heyen, Jonathan Koehler, Philine Warnke, Sven Wydra, Benjamin Teufel*

3D printing: State of the art, modes of industrial politics and impacts on regional innovation systems

*Dieter Rehfeld*

---

13:00 Lunch  
*Canteen "Mensa KIT"*

14:15 Keynote lecture  
*Dominique Foray "Supporting the Emergence of Micro-Systems of Innovation through Smart Specialisation: a new EU Policy Approach"*  
*Hertz Auditorium*

15:15 Coffee break  
*Foyer Tulla Building*

15:45 **Parallel sessions III**

**Track 3.1 Smart Specialisation 3**

*Tulla Building, Room 221*

Chair: Stephanie Daimer

Relatedness, knowledge complexity and technological opportunities of regions. A framework for smart specialisation

*Ron Boschma, Pierre-Alex Balland, David Rigby*

Constructing inter-regional smart specialisation platforms to optimise regional innovation systems: the case of advanced manufacturing for offshore industries

*Alasdair Reid, Lorena Rivera Leon*

**Track 3.2 Networks & Complexity 3**

*Tulla Building, Room 214*

Chair: Javier Revilla Diez

Who is the policy-maker? Agency in regional innovation policy in Greater Manchester and the Basque Country

*Kieron Flanagan, Edurne Magro, Elvira Uyarra, James Wilson*

Managed clusters: Core versus bolt-on activity

*Synnøve Rubach, Gunnar Andersson, Frode Ramstad Johansen*

The role of local agency in regional path renewal

*Roger Henning Normann, Mikaela Vasström, Hans Chr. Garmann Johansen*

---

**Track 3.3      The role of proximity 3**

*Tulla Building, Room 202*

Chair: Michaela Tripl

Disintegration and Slow Recovery of Inventory Networks: the Transformation in Slovakia

*Oto Hudec, Martina Prochádzková*

Knowledge conversion in a regional aquaculture innovation system

*Håkon Finne, Markus Steen, Tone Merethe Berg Aasen*

Struggling for autonomy – implementation of the Norwegian VRI programme

*Stig-Erik Jakobsen, Eva Melvær Langaas, Jens Kristian Fosse*

---

**Track 3.4      Geography of creativity**

*Tulla Building, Room 231*

Chair: Björn Asheim

Tell me why? Persistence of Entrepreneurship in the Kaliningrad Region in Spite of Extreme Disruptions

*Michael Fritsch, Alina Sorgner, Michael Wyrwich, Evgueniy Zazdravnykh*

City regions and local networks and global pipelines for collaboration in innovation

*Peter Teirlinck, David Manzheley*

Creativity, Education or What? On the Measurement of Regional Human Capital

*Eckhardt Bode, Lucia Perez Villar*

---

17:15            End of first day

19:00            Conference dinner

*Schloss Karlsruhe*



## Friday, 16 October 2015

8:00 Registration and coffee  
*Foyer Tulla Building*

9:00 Keynote lecture  
*Robert Hassink "Smart Specialisation: A Smarter Cluster Policy? A Constructive Critique"*  
*Hertz Auditorium*

10:00 Coffee break  
*Foyer Tulla Building*

10:15 **Parallel sessions IV**

### **Track 4.1 Smart Specialisation 4**

*Tulla Building, Room 221*

Chair: Knut Koschatzky

Understanding the "Regional Policy Mix", A Classification and Analysis of European Regions' Support Policies

*Henning Kroll*

Policy-Initiated Regional Path Development? Multiple Roles of Policy for the Emergence and Evolution of New Media and Biogas in Southern Sweden

*Hanna Martin, Roman Martin, Michaela Trippel*

Drivers for Regional Trade Specialisation in the EU

*Alexander Cordes, Birgit Gehrke, Daniel Schiller, Pia Wassmann*

### **Track 4.2 New modes of innovation 1**

*Tulla Building, Room 214*

Chair: Rune Dahl Fitjar

Open Region. A Concept for Regional Innovation Policies that creates and utilizes Opportunities for Innovations

*Suntje Schmidt, Felix C. Müller, Oliver Ibert, Verena Brinks*

What geographic scale are innovation systems?

*David Robert Charles*

New modes of innovation in a non-core region: first lessons learned from a multi-case study in Switzerland

*Vincent Grèzes*

---

**Track 4.3 Renaissance of industrial policies 1**

*Tulla Building, Room 202*

Chair: Vladimir Korzinov

Towards an Entrepreneurial State: Finding the Courage to Fail

*Mari Jose Aranguren, Joseph Lockwood, Madeline Smith, James Wilson*

Regional styles in enterprise and innovation policies

*Annalisa Caloffi, Marco Mariani*

Do general innovation policy tools fit all? The regional role of the Norwegian SkatteFunn scheme

*Olav R. Spilling, Arne Isaksen, Roger Normann*

---

**Track 4.4 Cross-border regions**

*Tulla Building, Room 231*

Chair: Thomas Stahlecker

Cross-border regional innovation systems: Conceptual backgrounds, empirical evidence and policy implications

*Teemu Makkonen, Stephan Rohde*

Openness and innovation in EU regions

*Manuel González López, Jorge Fernández Montoto*

---

12:00 Keynote lecture

*David Doloreux "Social and Organizational Dimensions of Innovation in Businesses and the Roles different Regions play herein"*

*Hertz Auditorium*

---

13:00 Lunch

*Canteen "Mensa KIT"*

14:15

## Parallel sessions V

### Track 5.1 Smart Specialisation 5

*Tulla Building, Room 221*

Chair: Ron Boschma

The role of cities in regional Smart Specialisation Strategies: Towards an integrated territorial strategy

*Miren Estensoro, Edurne Magro*

Smart specialisation strategies and cross-border integration of regional innovation systems: policy dynamics and challenges for the Upper Rhine

*Jean-Alain Héraud, Emmanuel Muller, Andrea Zenker*

### Track 5.2 New modes of innovation 2

*Tulla Building, Room 214*

Chair: Dieter Rehfehd

Opening up the innovation system framework towards new actors and institutions

*Philine Warnke, Knut Koschatzky, Andrea Zenker, Thomas Stahlecker, Oliver Som, Ewa Dönitz, Kerstin Cuhls, Sandra Güth, Lisa Nabit, Sybille Braungardt*

Power in the context of user driven complex innovations

*Zsuzsanna Vincze, Sujith Nair*

Functional and geographical Diversity in Collaboration and Scope of Innovation in SMEs

*Owusu Sarpong*

### Track 5.3 Renaissance of industrial policies 2

*Tulla Building, Room 202*

Chair: Roman Martin

R&D and productivity performance of Belgian regions

*Palina Shauchuk, Michele Cincera, Andre Spithoven, Peter Teirlinck*

Public Research Funding and Regional Economic Impact

*Stefano Bianchini, Julia Lane, Patrick Llerena*

The role of financial institutions in regional economic development

*Martin Gjelsvik*

---

**Track 5.4      New approaches to knowledge and technology transfer**

*Tulla Building, Room 231*

Chair: James Wilson

The Relationship Between Technology Transfer Through FDI and Labor Productivity in Developing Economies

*Cemil Faruk Durmaz*

Is there a relationship between workers experience portfolio and innovation?

*Marte Cecilie Wilhelmsen Solheim*

Vocational Training Centers: How to share technological innovations with industrial SMEs

*Igone Porto, Jose Ramón Otegi Olaso*

---

16:00            Closing session and farewell coffee

*Foyer Tulla Building*



On October 14<sup>th</sup> 2015 a **Doctoral Day** related to the **10<sup>th</sup> International Conference on Regional Innovation Policies** will take place at the University of Strasbourg.

The main topics of the pre-conference doctoral day are regional innovation, regional development and innovation policy.

A plenary talk titled "**Regional Innovation Systems and Knowledge Bases**" will be given by **Björn Asheim** (University of Stavanger; CIRCLE, Lund University, Sweden).

After the plenary presentation and the general discussion, participants of the event, both university professors and PhD students, will continue discussing theoretical but also practical aspects of regional innovation policy in smaller groups. During these parallel sessions, students will shortly present their contribution and discussion will follow.

Among group supervisor are

- **Robin Cowan** (University of Strasbourg)
- **David Doloreux** (Telfer School of Management, University of Ottawa)
- **Jean-Alain Héraud** (University of Strasbourg)
- **Patrick Llerena** (University of Strasbourg)
- **Emmanuel Muller** (University of Strasbourg and Fraunhofer ISI)

Event details:

- **Location of the event:** University of Strasbourg/BETA: 61 avenue de la Forêt Noire 67000 Strasbourg, France
- Working language: English
- **Contact information:** Dorothee Peitzmann (peitzmann@unistra.fr)

Participants will have access to all discussions. In addition, coffee and lunch will be offered free of charge. A bus transfer from Strasbourg to Karlsruhe after the Doctoral Day is organized at 4:30 pm.



# Session Guidelines

## Session format

Sessions consist up to three papers. Each presenter is given 15 up to a maximum of 20 minutes for presentation. Around 10 minutes per paper are devoted to comments by the chair and to the discussion.

Depending on the number of papers, the session chairs are free to give more or less time for each presentation.

The chair is responsible for making sure that the presenters keep within their allotted time. Each room contains two cue cards to alert presenters of their remaining time: a five minute and a one minute card. The chair should intervene when the allotted time for the presentation is over.

## Audio-visual equipment

Each seminar room is equipped with a beamer and a computer running Microsoft Windows. Please bring your presentation on a USB memory stick and show up at least 5 minutes before the start of your session to upload the presentation to the computer. Although it is possible to connect an own laptop, we recommend that you test your equipment before the session in order to reduce the risk that your presentation does not work.

In case of problems please contact the organizers.

## Social media

For tweeting about the conference, please use the hashtag #RIP15\_Karlsruhe.

## Practical information

Emergency numbers: 110 (Police) 112 (Fire and Ambulance)

Taxi: +49 721 944144  
+49 721 160200

Minicar: +49 721 565050

## Organizers

### Organizing Committee (Conference, Karlsruhe)

Andrea Hammer  
Anika Honold  
Knut Koschatzky  
Ingrid Ott  
Christine Schädel  
Thomas Stahlecker

Contact: info@rip2015.de

### Organizing Committee (Doctoral Day, Strasbourg)

Robin Cowan  
Jean-Alain Héraud  
Patrick Llerena  
Emmanuel Muller  
Ivan Savin

Contact: peitzmann@unistra.fr

### Scientific Committee

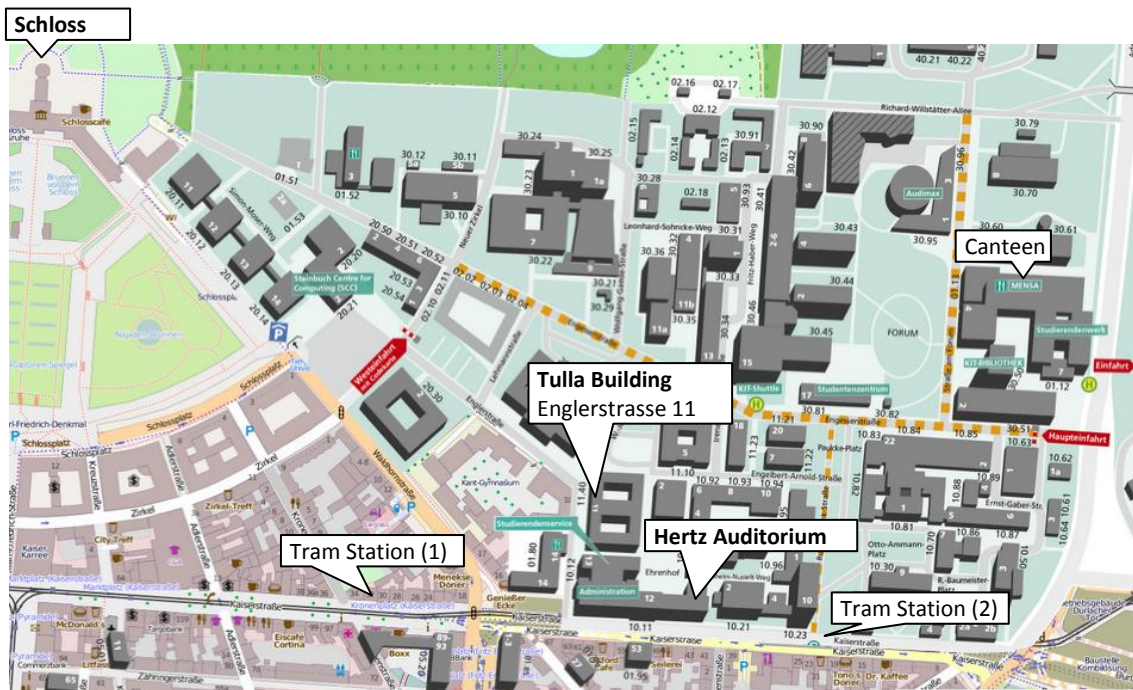
Björn Asheim (University of Stavanger;  
CIRCLE, Lund University, Sweden)  
Pierre-Alexandre Balland (University of  
Utrecht)  
Eckhardt Bode (Kiel Institute for the World  
Economy)  
Uwe Cantner (University of Jena)  
Rune Dahl Fitjar (University of Stavanger)

Tina Haisch (University of Bern)  
Kevin Morgan (University of Cardiff)  
Javier Revilla Diez (University of Cologne)  
Mário Rui Silva (University of Porto)  
Michaela Trippel (University of Lund)  
Elvira Uyarra (MBS Manchester)  
James Wilson (Universidad de Deusto)

## Topics

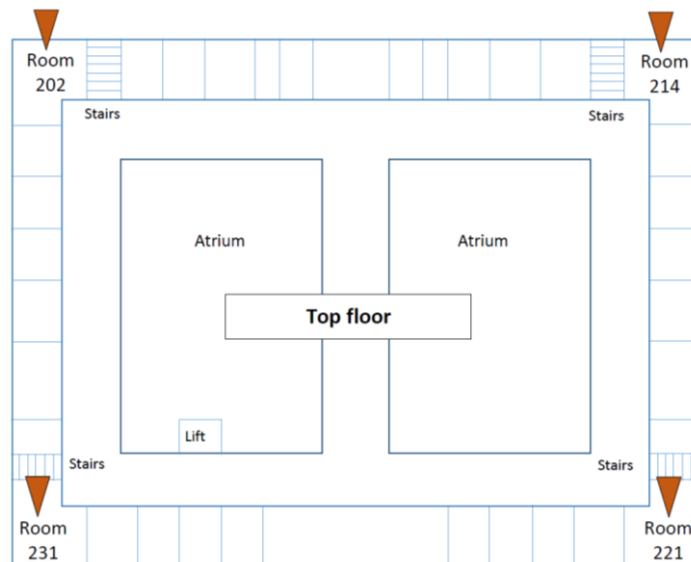
Smart Specialisation  
Networks & Complexity  
The role of proximity  
Advances in innovation system modelling  
Geography of creativity  
Cross-border regions  
New modes of innovation  
Renaissance of industrial policies  
New approaches to knowledge and technology transfer

# Venue



The conference takes place on the campus of the Karlsruhe Institute of Technology. It can easily be reached by public transport. Closest stations are "Kronenplatz" (1) (trams no. 1, 4, 5, S1/11, S2, S5/51) and "Durlacher Tor/KIT Campus Süd" (2) (trams no. 1, 2, 4, 5, S2, S4/41, S5).

The **seminar rooms 202, 214, 221, and 231** are located in the Tulla Building. The **keynote speeches** take place in the Hertz Auditorium which is close to the Tulla Building (see orange balloons).



**Coffee breaks** will take place at the Foyer of Tulla Building. **Lunch** will be served at the university canteen (Mensa). Walking distance about 5 minutes. Directions will be provided (see orange balloons).

The **Conference Dinner** takes place on Thursday, 15 October, from 19:00 to 23:00 at Karlsruhe Palace 'Schloss Karlsruhe' (main entrance). Closest tram station is Marktplatz (trams no. 1, 4, 5, S1/11, S2, S5/51). Walking time about 5 minutes.

## Menu

There are different stairways up to the canteen, so called "Linien". Different meals are issued at each Linie, and are shown in the menu plan below. **Please show the canteen staff your RIP participation badge.** A specific area in the canteen has been reserved for RIP participants (see orange balloons).

### Thursday, 15 October 2015

Linie 1	Rigatoni Milano with salad and a banana Rigatoni with vegetarian Bolognese and grated cheese, a salad and a banana Rigatoni with vegan Bolognese, a salad and a banana
Linie 2	Piccata Milano with chicken breast, herb-tomato sugo Vegan cutlet with herb-tomato sugo Spaghetti Chips Vegetables Green salad Various desserts
Linie 3	Indonesian-style hot curried leek noodles (vegetarian) Green salad Various desserts
Linie 4/5	Breaded feta with tzatziki (vegetarian) 3 meat rissoles with Dijon mustard sauce Chips Vegetables Green salad Homemade mashed potato Various desserts Soup of the day Baguette bread bun
L6 Update	Plate of mixed food Selection of starters Selection of vegetarian starters Vegetarian WOK Hamburger, salad buffet
Curry Queen	Vegan curried sausage Curried sausage Belgian chips

## Friday, 16 October 2015

- Linie 1      Roast pork with gravy and noodles  
Broccoli-nut cutlets with vegan herb sauce and salted boiled potatoes  
Dessert: Vanilla pudding or fruit
- Linie 2      Breaded turkey escalope baked with cheese and fruit  
Vegetarian cutlet baked with cheese and fruit  
Chips  
Steamed rice
- Linie 3      Farfalle with rocket and parmesan (vegetarian)  
Green salad  
Various desserts
- Linie 4/5    White fish in a potato crust with herb sauce  
Italian-style pasta bake (vegetarian)  
Chips  
Vegetables  
Green salad  
Homemade potato salad  
Various desserts  
Soup of the day
- L6 Update   Plate of mixed food  
Selection of starters  
Selection of vegetarian starters  
Vegetarian WOK  
Hamburger, salad buffet



**DFG**

eucor 